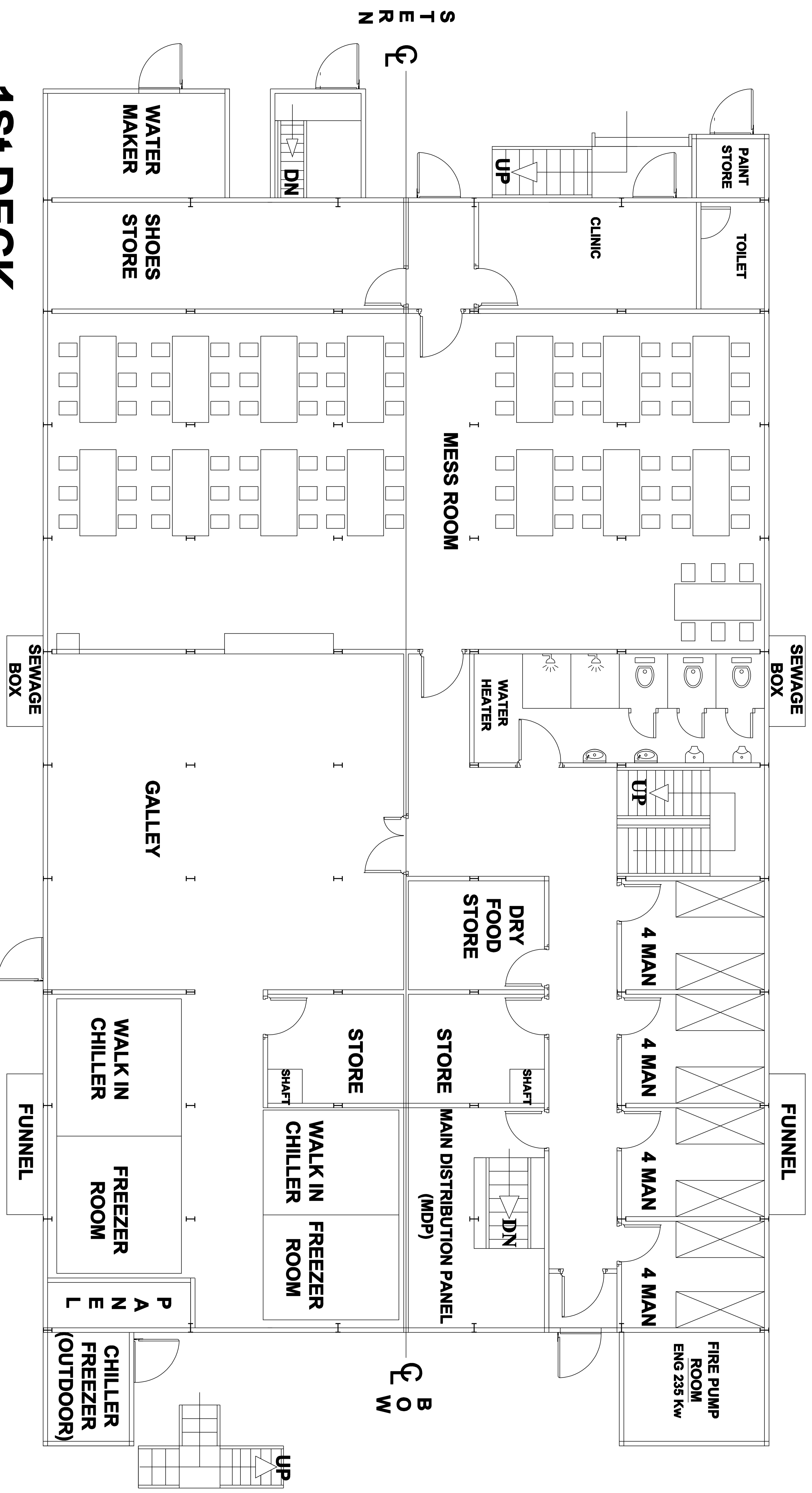


PORT SIDE



1st DECK

STARBOARD SIDE

PRINCIPAL DIMENSION

Length over all (Loa) 70.104 m
Breadth (B) 19.507 m
Depth (H) 4.267 m
Gross tonnage (GT) 2509 ton
Class BKI

PT. PEL MENARATAMA SAMUDRA INDAH	
AWB. PELIKAN PERDANA	
1st DECK LAY OUT	
BY	DATE
DRAWN MARCHAL SIAHAAN ST.	Jan 2009
CHECKED I.SOSVIRA MUDIARDI	Jan 2009
APPROVED HENDRO BUDIAMAN MSC,MBA.	Jan 2009
SCALE	REMARK
	ISSUED BY: ENGINEERING DEPT TDSL SHIPYARD ORIGINAL